

 **Primary 5 Science (Term 3) - Catholic High** [Add Questions](#)[Assign](#)[Settings](#)[Review](#)[Duplicate](#)[Print](#)[Delete](#)[Assign Test](#)**Test Introduction**[+ Add Introduction](#)**26 Questions** (28 Points)Question Bank: 9,275 Questions 

Test Questions

0 Test Assignments

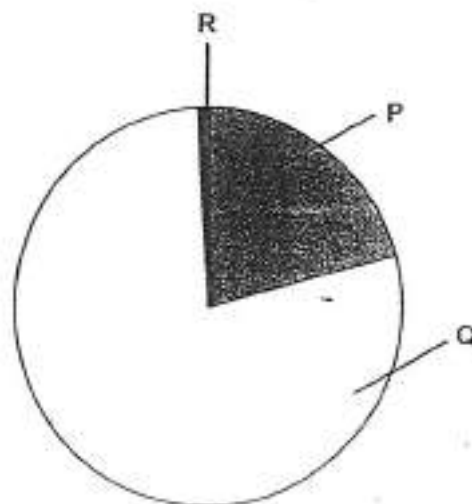
Question 1

Primary 5 Science » Primary 5 Science (Term 3)

2 pts

For each question, four options are given. One of them is the correct answer. Make your choice (A, B, C or D) and choose the correct answer. (11 x 2 marks)

The amount of different gases in the air is shown in the chart below.



Which of the following statements are correct?

- A Plants take in gas Q during photosynthesis.
- B Plants produce gas P during photosynthesis.
- C Animals only remove gas R during breathing.
- D Animals take in gases P, Q and R during breathing.

- A) A and B only
- B) A and C only
- ✓ C) B and D only
- D) B, C and D only

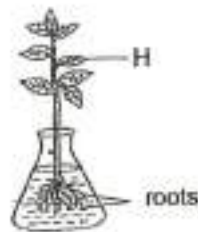
Question Type: Multiple Choice
Randomize Answers: No
Date Added: Fri 6th Aug 2021
Last Modified: N/A
QID#: 28,637,752

[Answers](#) |
 [Edit](#) |
 [Duplicate](#) |
 [Used In](#) |
 [Reorder](#)
[Remove From Test](#)

Question 2

Primary 5 Science » Primary 5 Science (Term 3) 2 pts

Study the diagram below.



What is the direction in which food and water are being transported between leaf H and the roots?

- A)

Directions for transport for water	Direction for transport of food
downwards	downwards
- B)

Directions for transport for water	Direction for transport of food
downwards	upwards and downwards
- C)

Directions for transport for water	Direction for transport of food
upwards	upwards
- ✓ D)

Directions for transport for water	Direction for transport of food
upwards	upwards and downwards

Question Type: Multiple Choice
Randomize Answers: No
Date Added: Fri 6th Aug 2021
Last Modified: N/A
QID#: 28,637,753

[Answers](#) |
 [Edit](#) |
 [Duplicate](#) |
 [Used In](#) |
 [Reorder](#)
[Remove From Test](#)

Question 3

Primary 5 Science » Primary 5 Science (Term 3) 2 pts

Which of the following is/are the function(s) of leaves?

- A Trap sunlight
- B Take in Water
- C Carry out photosynthesis
- D Allow the exchange of gases to take place

- A) A only
- B) B and C only
- ✓ C) A, C and D only
- D) B, C and D only

Question Type: Multiple Choice
Randomize Answers: No
Date Added: Fri 6th Aug 2021
Last Modified: N/A
QID#: 28,637,754

[Answers](#) | [Edit](#) | [Duplicate](#) | [Used In](#) | [Reorder](#)

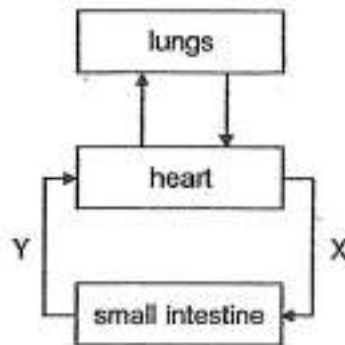
[Remove From Test](#)

Question 4

Primary 5 Science » Primary 5 Science (Term 3)

2 pts

The diagram below shows how blood flows in certain parts of the body a few hours after a meal.



Which one of the following shows the amount of oxygen and digested food in Y when compared to X?

- A)

Oxygen	Digested Food
less	less
- ✓ B)

Oxygen	Digested Food
less	more
- C)

Oxygen	Digested Food
more	less
- D)

Oxygen	Digested Food
more	more

Question Type: Multiple Choice
Randomize Answers: No
Date Added: Fri 6th Aug 2021
Last Modified: N/A
QID#: 28,637,755

[Answers](#) | [Edit](#) | [Duplicate](#) | [Used In](#) | [Reorder](#)

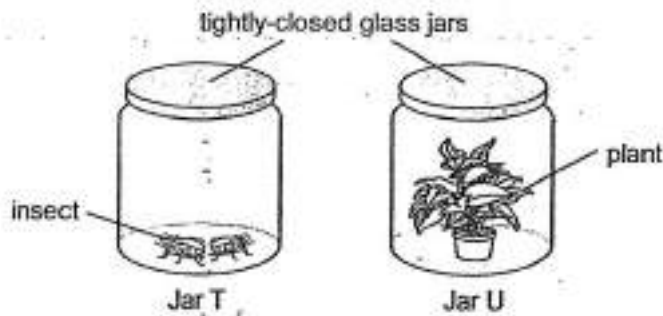
[Remove From Test](#)

Question 5

Primary 5 Science » Primary 5 Science (Term 3)

2 pts

Study the set-up below.



The two glass jars, T and U, were placed in the dark for six hours. What would happen to the amount of oxygen in both jars after six hours?

- A)

Jar T	Jar U
increased	increased
- B)

Jar T	Jar U
increased	decreased
- C)

Jar T	Jar U
decreased	increased
- ✓ D)

Jar T	Jar U
decreased	decreased

Question Type: Multiple Choice
Randomize Answers: No
Date Added: Fri 6th Aug 2021
Last Modified: N/A
QID#: 28,637,745

[Answers](#) | [Edit](#) | [Duplicate](#) | [Used In](#) | [Reorder](#)

[Remove From Test](#)

Question 6

Primary 5 Science » Primary 5 Science (Term 3)

2 pts

Which of the following statements about the heart are correct?

- A The heart is made up of muscles.
 B The heart stops pumping when we are asleep.
 C The heart pumps blood to all parts of the body.
 D The heart helps the body to take in oxygen and remove carbon dioxide.

- ✓ A) A and C only
- B) A and D only
- C) B and C only
- D) B and D only

Question Type: Multiple Choice
Randomize Answers: No
Date Added: Fri 6th Aug 2021
Last Modified: N/A
QID#: 28,637,746

[Answers](#) |
 [Edit](#) |
 [Duplicate](#) |
 [Used In](#) |
 [Reorder](#)

[Remove From Test](#)

Question 7

Primary 5 Science » Primary 5 Science (Term 3)

2 pts

Which one of the following correctly describes the functions of the parts of the human respiratory system?

- ✓ A)

Nose	Windpipe	Lungs
allows air to enter and leave the body	transports air to and from the lungs	exchange of gases takes place
- B)

Nose	Windpipe	Lungs
transports air to and from the lungs	exchange of gases takes place	allow air to enter and leave the body
- C)

Nose	Windpipe	Lungs
exchanges of gases takes place	transports air to and from the lungs	allow air to leave the body only
- D)

Nose	Windpipe	Lungs
allows air to leave the body only	transports air to and from the lungs	exchange of gases takes place

Question Type: Multiple Choice
Randomize Answers: No
Date Added: Fri 6th Aug 2021
Last Modified: N/A
QID#: 28,637,748

[Answers](#) |
 [Edit](#) |
 [Duplicate](#) |
 [Used In](#) |
 [Reorder](#)

[Remove From Test](#)

Question 8

Primary 5 Science » Primary 5 Science (Term 3)

2 pts

Which of the following are transported in the blood?

- A Water
- B Oxygen
- C Digested Food
- D Carbon Dioxide
- E Waste Materials

- A) B and D only
- B) A, B and C only
- C) A, D and E only
- ✓ D) A, B, C, D and E

Question Type: Multiple Choice
Randomize Answers: No
Date Added: Fri 6th Aug 2021
Last Modified: N/A
QID#: 28,637,747

[Answers](#) | [Edit](#) | [Duplicate](#) | [Used In](#) | [Reorder](#)

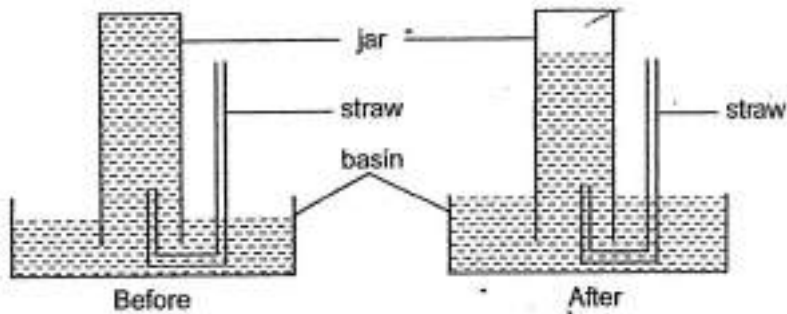
[Remove From Test](#)

Question 9

Primary 5 Science » Primary 5 Science (Term 3)

2 pts

Joseph wanted to measure his lung capacity. He inverted a jar into a basin of water. When the jar was completely filled with water, he took a deep breath and blew into the jar using a straw.



Which one of the following will indicate the capacity of his lungs?

- ✓ A) The volume of air in the jar.
- B) The volume of air in the straw.
- C) The volume of water in the jar.
- D) The volume of water in the basin of water.

Question Type: Multiple Choice
Randomize Answers: No
Date Added: Fri 6th Aug 2021
Last Modified: N/A
QID#: 28,637,749

[Answers](#) | [Edit](#) | [Duplicate](#) | [Used In](#) | [Reorder](#)

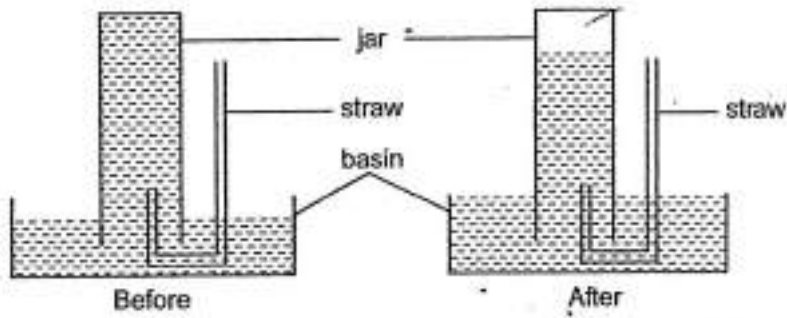
[Remove From Test](#)

Question 10

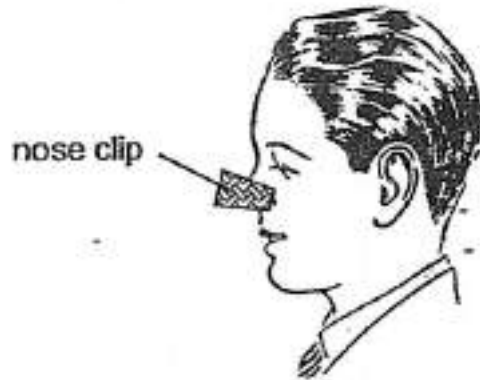
Primary 5 Science » Primary 5 Science (Term 3)

2 pts

Joseph wanted to measure his lung capacity. He inverted a jar into a basin of water. When the jar was completely filled with water, he took a deep breath and blew into the jar using a straw.



During the test, Joseph used a nose clip on his nose.



What was the function of the nose clip?

- A) To prevent water from entering his nose.
- ✓ B) To prevent air from escaping through his nose.
- C) To prevent too much air from entering his nose.
- D) To prevent water from escaping through his nose.

Question Type: Multiple Choice
Randomize Answers: No
Date Added: Fri 6th Aug 2021
Last Modified: N/A
QID#: 28,637,750

[Answers](#) | [Edit](#) | [Duplicate](#) | [Used In](#) | [Reorder](#)

[Remove From Test](#)

Question 11

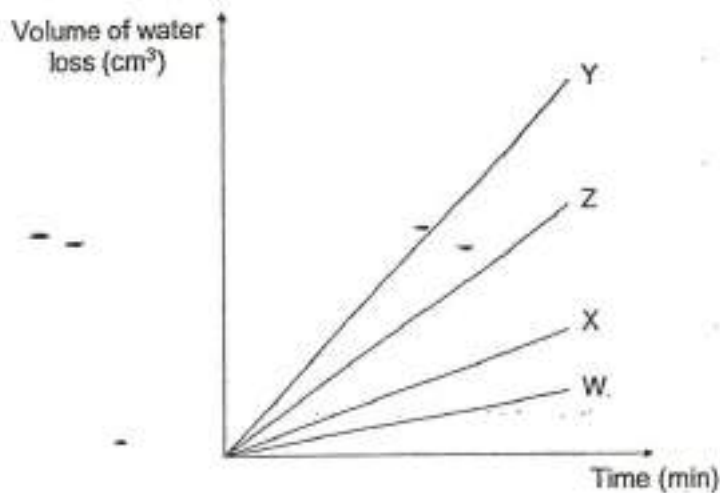
Primary 5 Science » Primary 5 Science (Term 3)

2 pts

An experiment was conducted using four similar leaves W, X, Y and Z on the same plant. Different surfaces of the leaves were coated with oil as shown in the table below.

Leaf	Coated with oil	
	Upper surface	Lower surface
W	yes	yes
X	yes	no
Y	no	no
Z	no	yes

The plant was placed under bright sunlight for two hours. The volume of water loss from each leaf was measured and plotted in the graph below.



What can you conclude about the stomata on the leaves of this plant?

- A) More stomata are found on the lower surfaces.
- ✓ B) More stomata are found on the upper surfaces.
- C) No stomata are found on both the upper and lower surfaces.
- D) Equal number of stomata are found on both the upper and lower surfaces.

Question Type: Multiple Choice
 Randomize Answers: No
 Date Added: Fri 6th Aug 2021
 Last Modified: N/A
 QID#: 28,637,751

[Answers](#) |
 [Edit](#) |
 [Duplicate](#) |
 [Used In](#) |
 [Reorder](#)

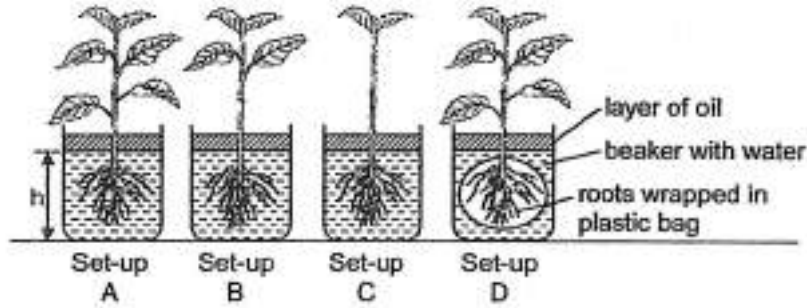
[Remove From Test](#)

Question 12

Primary 5 Science » Primary 5 Science (Term 3)

0 pts

Jordan placed four similar plants in identical beakers. Each beaker contains an equal amount of water as shown below. The four set-ups A, B, C and D were placed near a window for a day.



He then recorded the amount of water left in each beaker at the end of the experiment.

What is the purpose of the layer of oil in this experiment? (1 mark)

This question is designed for extended answers that parent/ teacher will have to assign and guide child to attempt after the test has been completed.

Grading: This question type is not graded on this system and will not affect the final score as it was designed in such a way that it requires manual assistance.

Question Type: Essay
Date Added: Fri 6th Aug 2021
Last Modified: N/A
QID#: 28,637,730

Correctly answered feedback

To prevent water in the beaker from evaporating.

Incorrectly answered feedback

To prevent water in the beaker from evaporating.

[Answers](#) | [Edit](#) | [Duplicate](#) | [Used In](#) | [Reorder](#)

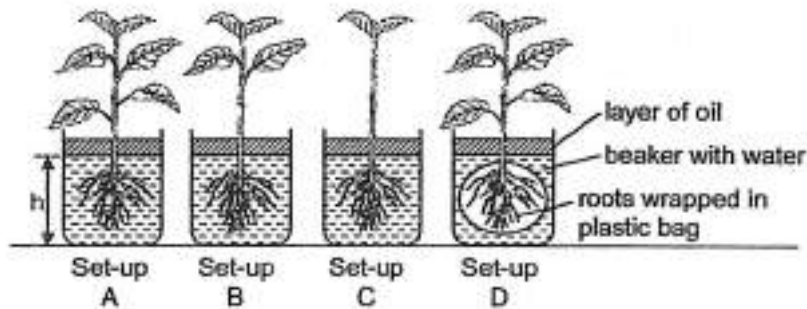
[Remove From Test](#)

Question 13

Primary 5 Science » Primary 5 Science (Term 3)

2 pts

Jordan placed four similar plants in identical beakers. Each beaker contains an equal amount of water as shown below. The four set-ups A, B, C and D were placed near a window for a day.



He then recorded the amount of water left in each beaker at the end of the experiment.

Which two set-ups should be compared to show that the roots of the plant absorb water? Give a reason for your answer.

Accepted answers:

- ✓ Set-up A and D
- ✓ Set - up A and D
- ✓ Setup A and D
- ✓ Set-up D and A
- ✓ Set - up D and A
- ✓ Setup D and A
- ✓ A and D
- ✓ D and A

Question Type: Free Text
Date Added: Fri 6th Aug 2021
Last Modified: N/A
QID#: 28,637,739

Correctly answered feedback

Set-up A and D. The changed variable is the presence of roots in water.

Incorrectly answered feedback

Set-up A and D. The changed variable is the presence of roots in water.

[Answers](#) | [Edit](#) | [Duplicate](#) | [Used In](#) | [Reorder](#)

[Remove From Test](#)

Question 14

Primary 5 Science » Primary 5 Science (Term 3)

0 pts

Zhi Wen observed the gills of a fish using a magnifying glass.



The gills have many folds. How does this help the fish in the process of taking in oxygen? (1 mark)

This question is designed for extended answers that parent/ teacher will have to assign and guide child to attempt after the test has been completed.

Grading: This question type is not graded on this system and will not affect the final score as it was designed in such a way that it requires manual assistance.

Question Type: Essay
Date Added: Fri 6th Aug 2021
Last Modified: N/A
QID#: 28,637,731

Correctly answered feedback

The folds of the gills increased the surface area to take in the oxygen at a faster rate.

Incorrectly answered feedback

The folds of the gills increased the surface area to take in the oxygen at a faster rate.

[Answers](#) | [Edit](#) | [Duplicate](#) | [Used In](#) | [Reorder](#)

[Remove From Test](#)

Question 15

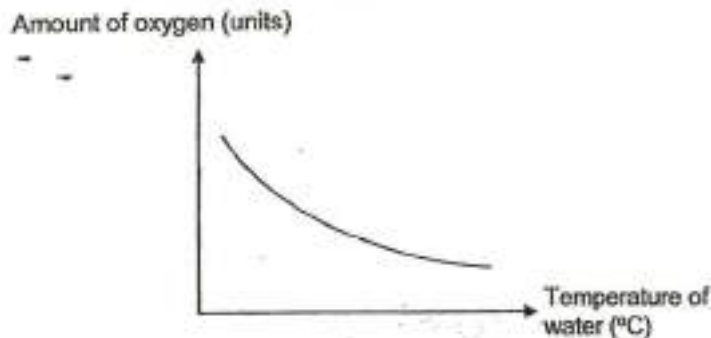
Primary 5 Science » Primary 5 Science (Term 3)

0 pts

Zhi Wen observed the gills of a fish using a magnifying glass.



He then conducted an experiment to find out if temperature affects the amount of oxygen present in the water of his fish tank. His results are shown in the graph below.



He observed that the breathing rate of his fishes in the tank increased as the temperature of the water in the fish tank increased. Based on the results of the experiment, explain this observation. [2]

Question Type: Essay
Date Added: Fri 6th Aug 2021
Last Modified: N/A
QID#: 28,637,732

Correctly answered feedback

As the temperature in the fish tank increase, the amount of oxygen present in the water of the fish tank decrease. The fishes need to increase their breathing rate to take in more oxygen.

Incorrectly answered feedback

As the temperature in the fish tank increase, the amount of oxygen present in the water of the fish tank decrease. The fishes need to increase their breathing rate to take in more oxygen.

[Answers](#) | [Edit](#) | [Duplicate](#) | [Used In](#) | [Reorder](#)

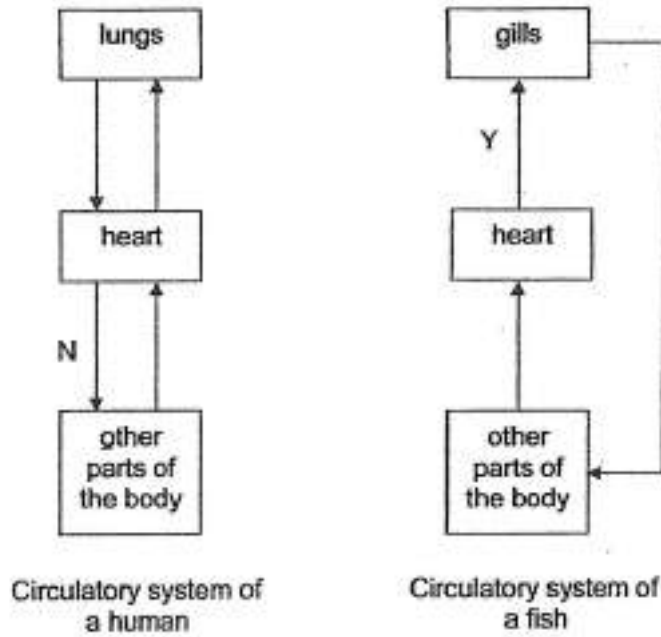
[Remove From Test](#)

Question 16

Primary 5 Science » Primary 5 Science (Term 3)

0 pts

The diagrams below show the circulatory systems of a human and a fish. The arrows represent the blood vessels that carry blood around the body.



State one difference between the flow of blood in a human and in a fish. (1 mark)

This question is designed for extended answers that parent/ teacher will have to assign and guide child to attempt after the test has been completed.

Grading: This question type is not graded on this system and will not affect the final score as it was designed in such a way that it requires manual assistance.

Question Type: Essay
Date Added: Fri 6th Aug 2021
Last Modified: N/A
QID#: 28,637,733

Correctly answered feedback

The flow of blood in a human is double circulatory while the blood flow in a fish is single circulatory.

Incorrectly answered feedback

The flow of blood in a human is double circulatory while the blood flow in a fish is single circulatory.

[Answers](#) | [Edit](#) | [Duplicate](#) | [Used In](#) | [Reorder](#)

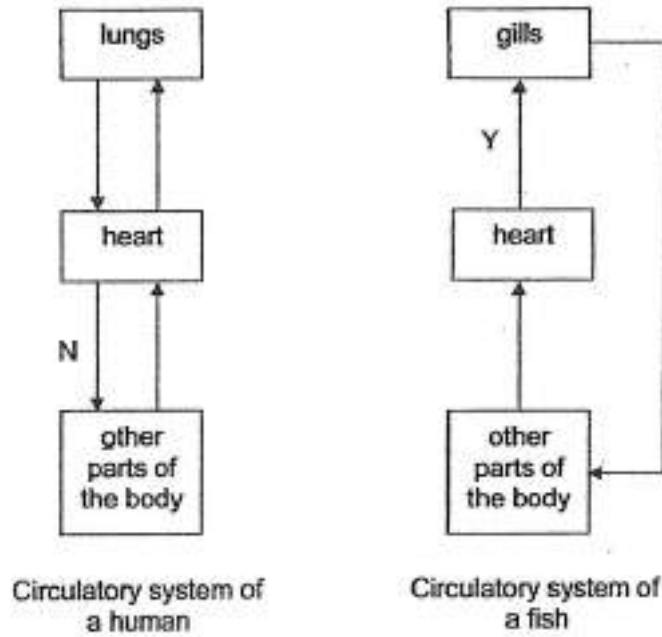
[Remove From Test](#)

Question 17

Primary 5 Science » Primary 5 Science (Term 3)

0 pts

The diagrams below show the circulatory systems of a human and a fish. The arrows represent the blood vessels that carry blood around the body.



State one difference between the gases found in the blood flowing at N and Y.
(1 mark)

This question is designed for extended answers that parent/ teacher will have to assign and guide child to attempt after the test has been completed.

Grading: This question type is not graded on this system and will not affect the final score as it was designed in such a way that it requires manual assistance.

Question Type: Essay
Date Added: Fri 6th Aug 2021
Last Modified: N/A
QID#: 28,637,734

Correctly answered feedback

Blood flowing at N is richer in oxygen than in blood flowing in Y.

Incorrectly answered feedback

Blood flowing at N is richer in oxygen than in blood flowing in Y.

[Answers](#) | [Edit](#) | [Duplicate](#) | [Used In](#) | [Reorder](#)

[Remove From Test](#)

Question 18

Primary 5 Science » Primary 5 Science (Term 3)

0 pts

Gayatri removed a small ring of bark from a plant growing in an open field. The ring of bark that was removed contained some food-carrying tubes. The water-carrying tubes were not removed. After a few days, a swelling was seen above the ring.



Give a reason for the swelling above the ring. (1 mark)

This question is designed for extended answers that parent/ teacher will have to assign and guide child to attempt after the test has been completed.

Grading: This question type is not graded on this system and will not affect the final score as it was designed in such a way that it requires manual assistance.

Question Type: Essay
Date Added: Fri 6th Aug 2021
Last Modified: N/A
QID#: 28,637,737

Correctly answered feedback

The food made by the leaves could not reach the bottom of the plant and thus is accumulated there as the food-carrying tube were removed.

Incorrectly answered feedback

The food made by the leaves could not reach the bottom of the plant and thus is accumulated there as the food-carrying tube were removed.

[Answers](#) | [Edit](#) | [Duplicate](#) | [Used In](#) | [Reorder](#)

[Remove From Test](#)

Question 19

Primary 5 Science » Primary 5 Science (Term 3)

0 pts

Gayatri removed a small ring of bark from a plant growing in an open field. The ring of bark that was removed contained some food-carrying tubes. The water-carrying tubes were not removed. After a few days, a swelling was seen above the ring.



Explain what would happen to the plant if the water-carrying tubes were removed. (2 marks)

This question is designed for extended answers that parent/ teacher will have to assign and guide child to attempt after the test has been completed.

Grading: This question type is not graded on this system and will not affect the final score as it was designed in such a way that it requires manual assistance.

Question Type: Essay
Date Added: Fri 6th Aug 2021
Last Modified: N/A
QID#: 28,637,738

Correctly answered feedback

Without the water-carrying tubes, the plant cannot transport water from the roots to the leaves.
 Thus the leaves will have no water to make food.

Incorrectly answered feedback

Without the water-carrying tubes, the plant cannot transport water from the roots to the leaves.
 Thus the leaves will have no water to make food.

[Answers](#) | [Edit](#) | [Duplicate](#) | [Used In](#) | [Reorder](#)

[Remove From Test](#)

Question 20

Primary 5 Science » Primary 5 Science (Term 3)

1 pt

Gayatri removed a small ring of bark from a plant growing in an open field. The ring of bark that was removed contained some food-carrying tubes. The water-carrying tubes were not removed. After a few days, a swelling was seen above the ring.



Besides water, what other substance does water-carrying tubes carry? (1 mark)

Accepted answers:

✓ Mineral Salts

Question Type: Free Text
Date Added: Fri 6th Aug 2021
Last Modified: N/A
QID#: 28,637,743

[Answers](#) | [Edit](#) | [Duplicate](#) | [Used In](#) | [Reorder](#)

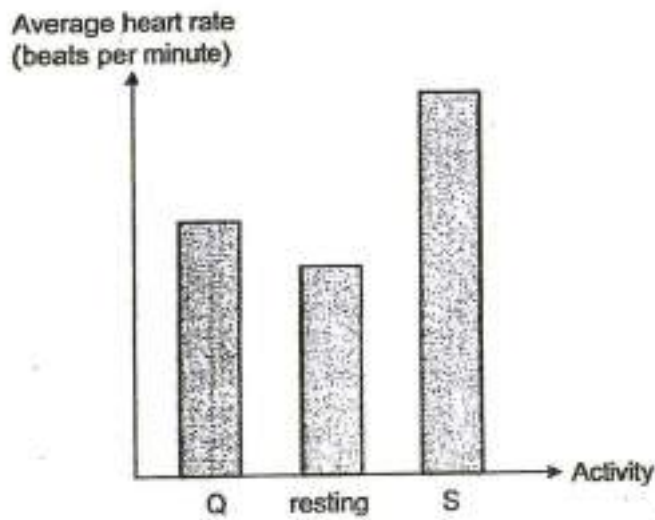
[Remove From Test](#)

Question 21

Primary 5 Science » Primary 5 Science (Term 3)

0.5 pts

Sally wanted to find out how her average heart rate changed when she engaged in three different activities. The results are shown below.



Which part of the graph, Q or S, represents the following activity below?

Jumping: _____

Accepted answers:

- ✓ S
- ✓ Part S
- ✓ Bar S

Question Type: Free Text
Date Added: Fri 6th Aug 2021
Last Modified: N/A
QID#: 28,637,740

[Answers](#) | [Edit](#) | [Duplicate](#) | [Used In](#) | [Reorder](#)

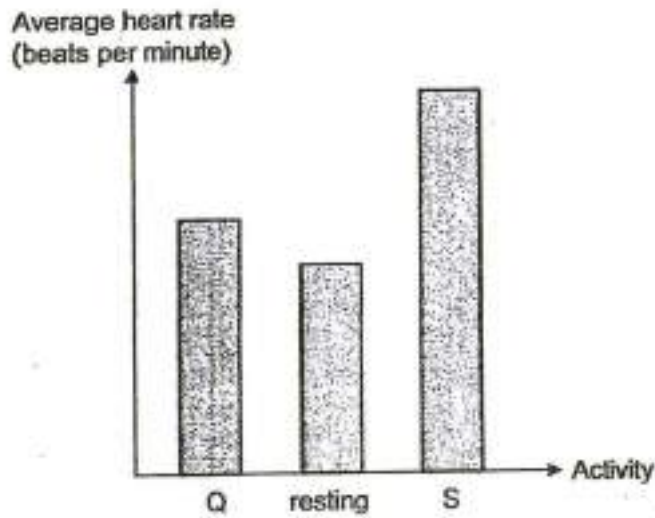
[Remove From Test](#)

Question 22

Primary 5 Science » Primary 5 Science (Term 3)

0.5 pts

Sally wanted to find out how her average heart rate changed when she engaged in three different activities. The results are shown below.



Which part of the graph, Q or S, represents the following activity below?

Strolling: _____

Accepted answers:

- ✓ Q
- ✓ Part Q
- ✓ Bar Q

Question Type: Free Text
Date Added: Fri 6th Aug 2021
Last Modified: N/A
QID#: 28,637,741

[Answers](#) | [Edit](#) | [Duplicate](#) | [Used In](#) | [Reorder](#)

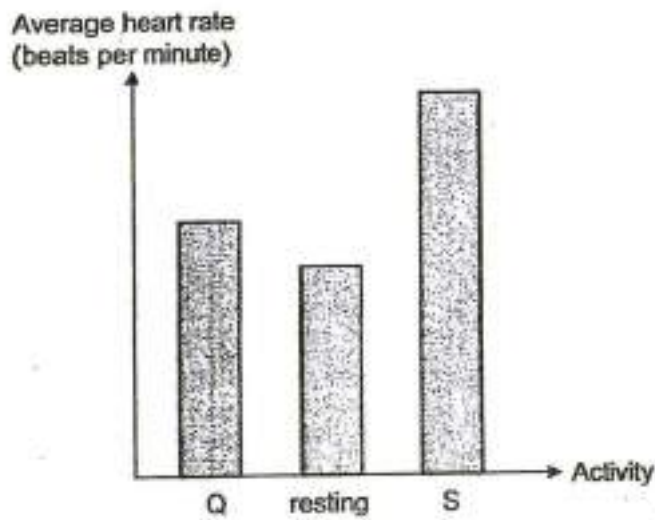
[Remove From Test](#)

Question 23

Primary 5 Science » Primary 5 Science (Term 3)

0 pts

Sally wanted to find out how her average heart rate changed when she engaged in three different activities. The results are shown below.



Explain why her average heart rate increased while she was engaged in activity S. (2 marks)

This question is designed for extended answers that parent/ teacher will have to assign and guide child to attempt after the test has been completed.

Grading: This question type is not graded on this system and will not affect the final score as it was designed in such a way that it requires manual assistance.

Question Type: Essay
Date Added: Fri 6th Aug 2021
Last Modified: N/A
QID#: 28,637,735

Correctly answered feedback

Her heart pumps harder to carry blood faster to the muscles to supply them with more oxygen and more digested food to release more energy.

Incorrectly answered feedback

Her heart pumps harder to carry blood faster to the muscles to supply them with more oxygen and more digested food to release more energy.

[Answers](#) | [Edit](#) | [Duplicate](#) | [Used In](#) | [Reorder](#)

[Remove From Test](#)

Question 24

Primary 5 Science » Primary 5 Science (Term 3)

1 pt

Sally felt her pulse by pressing her fingers on her wrist as shown below.



To feel a pulse, which part of the circulatory system were her fingers pressing on?

Accepted answers:

- ✓ Her blood vessels.
- ✓ Blood vessels
- ✓ her blood vessels

Question Type: Free Text
Date Added: Fri 6th Aug 2021
Last Modified: N/A
QID#: 28,637,742

[Answers](#) | [Edit](#) | [Duplicate](#) | [Used In](#) | [Reorder](#)

[Remove From Test](#)

Question 25

Primary 5 Science » Primary 5 Science (Term 3)

0 pts

What role does the circulatory system play in the digestion of food? (1 mark)

This question is designed for extended answers that parent/ teacher will have to assign and guide child to attempt after the test has been completed.

Grading: This question type is not graded on this system and will not affect the final score as it was designed in such a way that it requires manual assistance.

Question Type: Essay
Date Added: Fri 6th Aug 2021
Last Modified: N/A
QID#: 28,637,736

Correctly answered feedback

The circulatory system transports digested food in the blood to all parts of the body.

Incorrectly answered feedback

The circulatory system transports digested food in the blood to all parts of the body.

[Answers](#) | [Edit](#) | [Duplicate](#) | [Used In](#) | [Reorder](#)

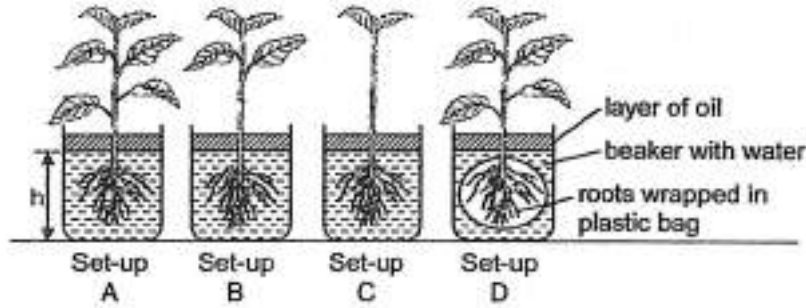
[Remove From Test](#)

Question 26

Primary 5 Science » Primary 5 Science (Term 3)

1 pt

Jordan placed four similar plants in identical beakers. Each beaker contains an equal amount of water as shown below. The four set-ups A, B, C and D were placed near a window for a day.



He then recorded the amount of water left in each beaker at the end of the experiment.

Complete the table below to show the correct results of the experiment. [1]

h (cm)	Set-up
18	
14	
20	
16	

Clue	Match
18 Points: +0.2 -0	Set-up C
14 Points: +0.3 -0	Set-up A
20 Points: +0.3 -0	Set-up D
16 Points: +0.2 -0	Set-up B

Question Type: Matching
 Shuffle Mode: Shuffle Matches Only
 Date Added: Fri 6th Aug 2021
 Last Modified: N/A
 QID#: 28,637,744